



Features of New Zealand's Dairy Regulatory System and Recent Export Trends for Infant Formula

新西兰乳品监管系统特点和 婴幼儿配方乳品近期出口趋势

Dr Ron Xavier (First Secretary, New Zealand Embassy)

陈荣恩博士（新西兰驻华大使馆一秘）

Dairy legislation

乳制品立法

New Zealand's dairy legislation applies to the manufacture of infant formula, with the main legislation being the **Animal Products Act 1999** which applies from farm to export

新西兰的乳品立法适用于婴儿配方乳品的生产，其中主要法律是1999动物产品法案覆盖从农场到出口。

Animal Products Act (farm through to export)

动物产品法（从农场到出口）



Biosecurity Act (farm)

生物安全法（农场）

Agricultural Compounds and Vet Medicines Act (farm)

农业化学品和兽药法（农场）

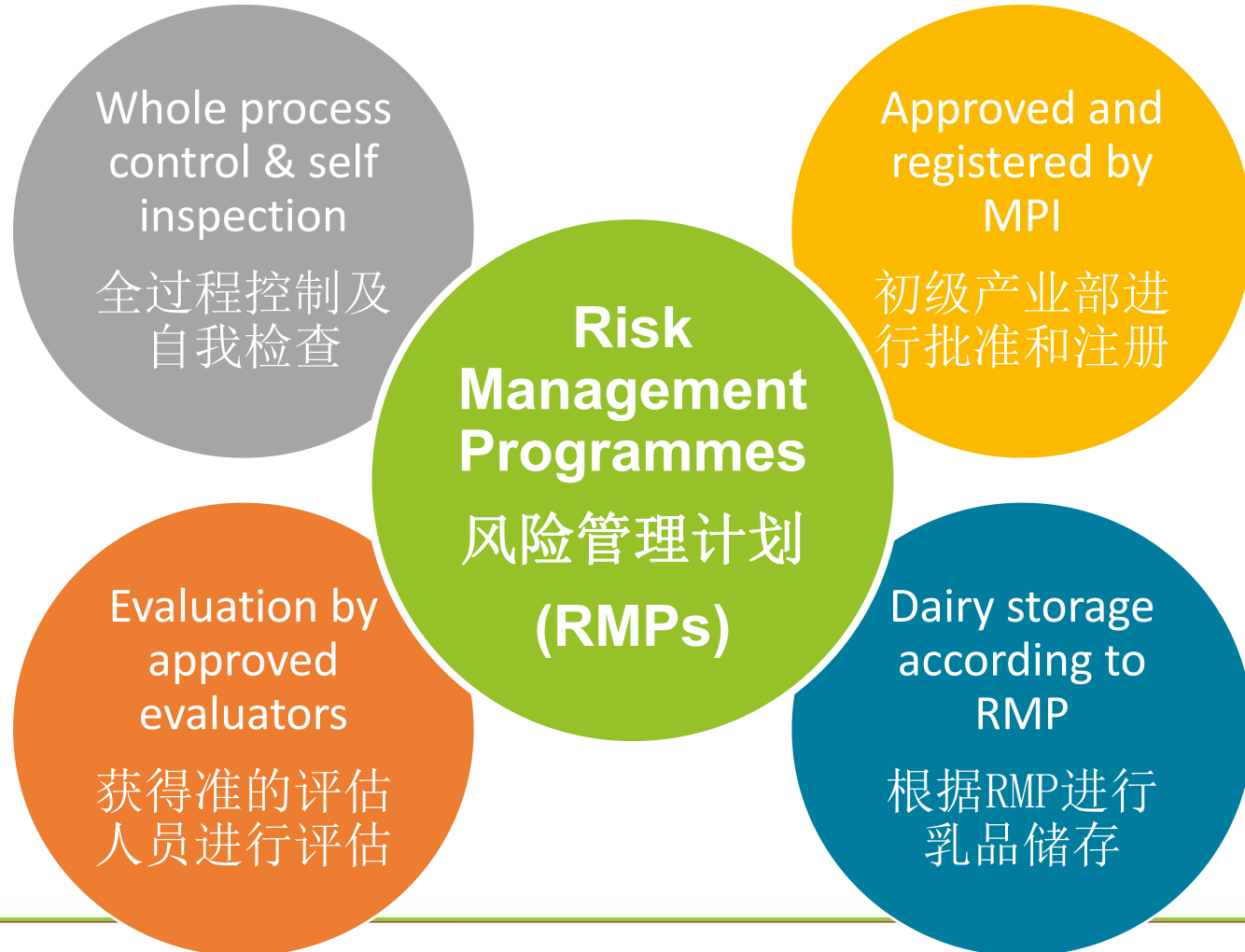
Food Act (processing through to domestic sale)

食品法（从加工到国内销售）



Risk management programmes (RMP)

风险管理计划



HACCP-based RMP

基于HACCP的风险管理计划

On-site performance verification frequency is at least 3 monthly for RMPs of dairy manufacturers
对于乳品生产企业RMP的现场表现验证频率是至少每三个月一次。



Stringent Export Requirements

严格的出口要求

All New Zealand exported food MUST meet:
所有新西兰出口食品必须满足:

New Zealand
standards
新西兰标准

Export
requirements
出口要求

Importing
country
requirements
进口国家要求

MPI Official
Assurance
(Health Certificate)
初级产业部官方保
证 (卫生证书)

Infant and Young Children Formula Regulations 婴幼儿配方乳品法规

▪ **Animal Products (Dairy regulations)**

- **Animal Products Notices** 动物产品通告
- China Overseas Market Access Requirements (OMAR)
- Export Requirements for Infant Formula Products and Formulated Supplementary Foods for Young Children
- Manufacture of Dairy Based Infant Formula Products and Formulated Supplementary Foods for Young Children
- Labelling Requirements for Exports of Dairy Based Infant Formula Products and Formulated Supplementary Food for Young Children

▪ **动物产品（乳品法规）**

- 动物产品通告
- 海外市场准入要求（OMAR）
- 婴儿配方产品和幼儿配方辅食出口要求
- 乳基婴儿配方产品和幼儿配方辅食生产
- 乳基婴儿配方产品和幼儿配方辅食标签要求



Specific requirements – manufacture

具体要求--生产

- The **Animal Products Notice** for manufacturing specifies requirements for:
 - Premises and equipment including hygiene zones
 - Cleaning and maintenance including CIP
 - Wet and dry processing
 - Raw material and formulation controls
 - Sampling and testing
 - Validation of processes such as homogeneity
 - Traceability and recall procedures
 - Record keeping
- 生产方面的**动物产品通告**为以下内容设定了要求：
 - 场所和设备包括清洁区
 - 清洁和维护包括CIP
 - 湿法加工和干法加工
 - 原料和配方控制
 - 采样和检测
 - 确认过程，例如匀质性
 - 可追溯性和召回程序
 - 保留记录



Specific requirements – labels

具体要求--标签

- The **Animal Products Notice** for labelling specifies requirements for:
 - Customer information about type of product, protein source, ingredients and allergy warnings
 - Nutrition information
 - Nutrition and health claims
 - New Zealand origin claims
 - Traceability information back to the manufacturer
 - Breast feeding promotion
 - Suitability statement
- 动物产品通告具体标签要求：
 - 消费者有关产品种类、蛋白质来源、配料和过敏警示
 - 营养素信息
 - 营养素和健康声称
 - 新西兰原产地声称
 - 生产企业追溯信息
 - 提倡母乳喂养
 - 可持续声明



Layers of approval and verification

层层评估审核

- Specific requirements for infant and young children formula in RMPs:
 - Evaluated by MPI approved dairy RMP evaluators
 - Assessed as part of RMP approval and registration by MPI
 - Audited during performance based verification by MPI approved dairy verifiers
- Specific requirements for China listed infant formula manufacturers
 - All of the above plus assessed by specialist MPI system auditors through document review and onsite audit as part of China listing process
- RMP中对婴幼儿配方乳品的具体要求
 - 由获得初级产业部批准的乳品RMP评估人员进行评估
 - 作为初级产业部对RMP批准和注册的一部分受到评估
 - 在获得初级产业部批准的乳品验证人员开展基于表现的验证工作过程中受到审核
- 对中国注册婴幼儿配方乳品生产企业的特殊要求
 - 所有以上，再加上由初级产业部系统审核专业人员通过文件和现场审核进行评估，这是获得中国注册流程的一部分

Traceability in official electronic certification system 官方电子证书系统追溯

- All animal product movements entered in MPI's official electronic certification system
- Dairy information must include:
 - the species of origin for milk-derived ingredients
 - manufacturing date and expiry date
 - batch numbers and identifiers
 - the country eligibility for the dairy product
- Applies also to any imported animal product ingredients, such as whey protein concentrate and lactose
- 所有动物产品移动情况都输入到初级产业部的官方电子证书系统中
- 乳品信息必须包括：
 - 乳源性原料的来源品种
 - 生产日期和到期日
 - 批次号和识别号
 - 乳品出口到其他国家的资格
- 也适用于任何进口的动物产品原料，例如浓缩乳清蛋白和乳糖



Summary of New Zealand Regulatory System

新西兰监管体系概要

- New Zealand's regulatory system ensures:
 - whole process control from production of milk on the dairy farm to export of infant formula
 - producers and exporters take responsibility for the infant formula they produce and export
- Regulations and regulatory activities apply across the dairy supply chain including:
 - evaluation, approval and verification of RMPs
 - traceability using MPI's official electronic certification system
 - specific requirements for manufacture, labelling and export of infant and young children formula
- 新西兰监管体系确保：
 - 牧场生乳生产到婴儿配方乳品出口全过程控制
 - 生产企业和出口商对其生产和出口的婴儿配方乳品负责
- 法规和监管活动适用于整个乳品供应链包括：
 - 风险管理计划的评估、批准和验证
 - 使用初级产业部官方电子验证系统追溯
 - 婴幼儿配方产品企业、标签和出口具体要求



Recent Export Trends

近期出口趋势

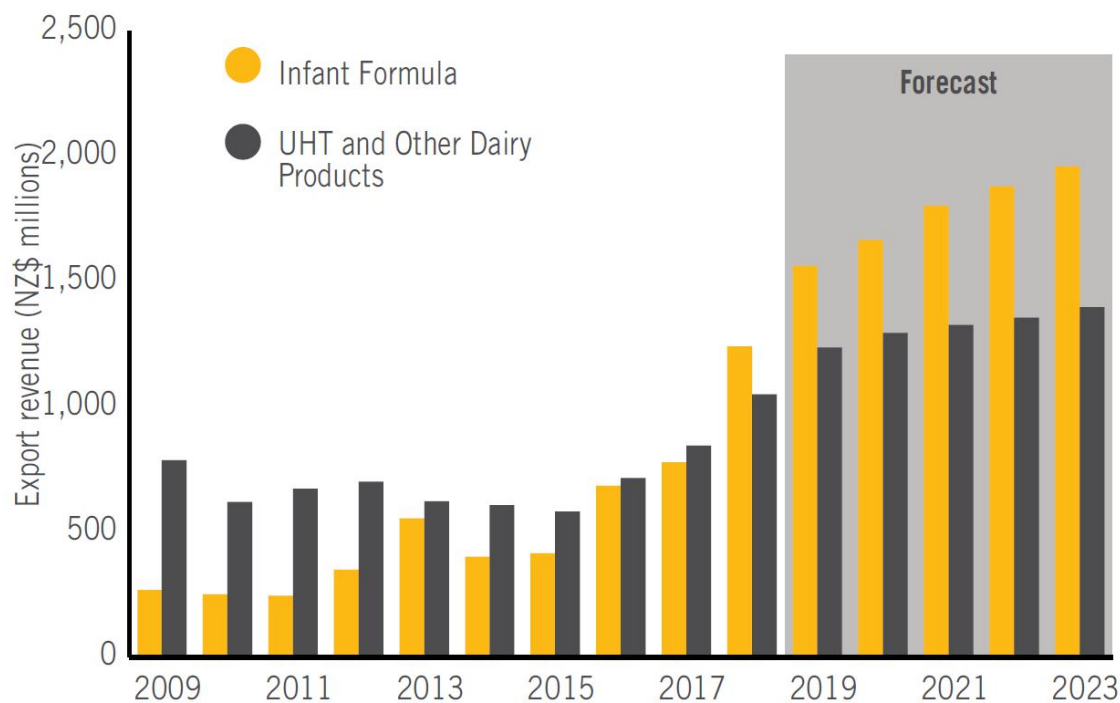
- Sustainable growth of New Zealand infant formula industry
 - Diverse but integrated supply chain
- Focus on exports to China
 - Well established relationships between New Zealand and Chinese enterprises
- 新西兰婴配行业可持续增长
 - 多元的但是一体化的供应链
- 关注对华出口
 - 新西兰和中国企业之间良好的关系



Sustainable Growth of Infant Formula Industry

婴配行业可持续增长

- Growth in infant formula exports in last 5 years
- Infant formula export growth due to industry moving from bulk commodities to developing sustainable supply chains for nutritional ingredients and final retail products
- 过去5年里婴配出口的增长
- 婴配出口增长是因为行业从大宗产品转向发展营养配料和最终零售产品可持续供应链



Infant formula and "other" dairy export revenues 2009–23

Source: Stats NZ and MPI.

Diverse and sustainable supply chain

多元的和可持续的供应链

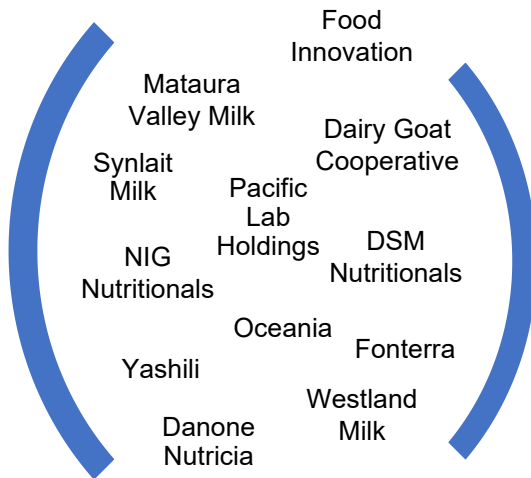
New Zealand now has a range of manufacturers that meet requirements and provide a sustainable supply of infant formula and ingredients

新西兰目前有一系列企业，满足要求并提供可持续供应的婴儿配方乳品和配料



Dairy farms supplying raw cow, sheep and goat milk

牧场供应生的牛乳、山羊和绵羊乳



Examples of infant formula ingredient manufacturers

婴配配料企业的例子



Examples of infant formula manufacturers

婴配生产企业的例子



Finished infant formula

最终婴配产品

China focus

聚焦中国

Top 10 export destinations



- China continues to be New Zealand's most significant export destination for infant formula
- 40% of New Zealand exports to Mainland China and 22% exports to China's Hong Kong region
- 中国仍然是新西兰最重要的婴儿配方乳品出口目的地
- 新西兰对中国大陆出口占40%，对中国香港地区出口占22%

China New Zealand Relationships

中国新西兰关系

- Exports of infant formula from New Zealand to China have established and strengthened over the past 5 years
- This has resulted in New Zealand suppliers having strong well established relationships within New Zealand and with Chinese enterprises
- These relationships enable more effective responses to Chinese regulatory changes and consumer preferences
- 新西兰婴儿配方乳品对华出口在过去5年里不断增强。
- 这使得新西兰供应商在新西兰国内以及和中国企业建立了良好的关系
- 这些关系使我们能有效地应对中方监管变化和消费者偏好



Examples of Chinese companies with linkages into infant formula production in New Zealand

中国公司在新西兰和婴配生产相关的例子

Ministry for Primary Industries
Manatū Ahu Matua



THANK YOU
谢谢